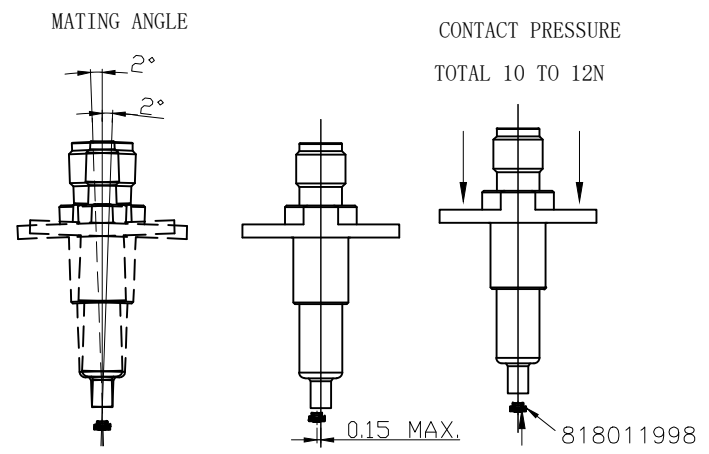
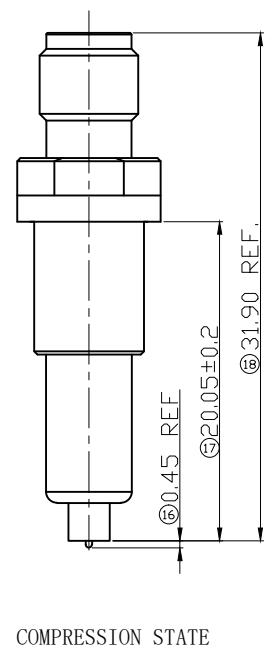
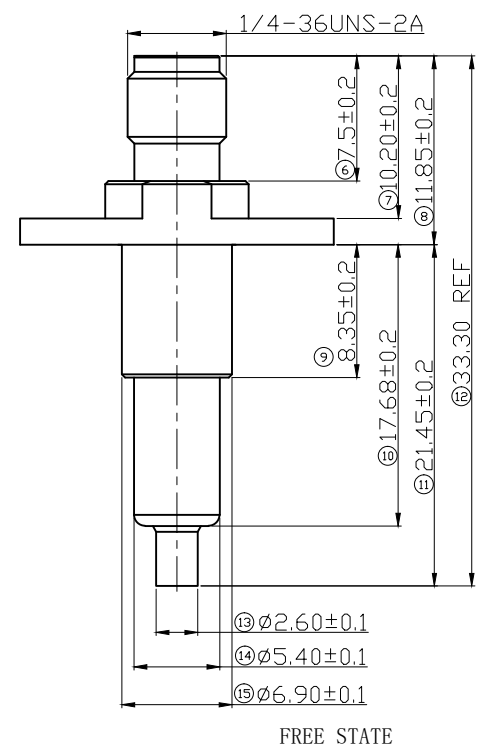
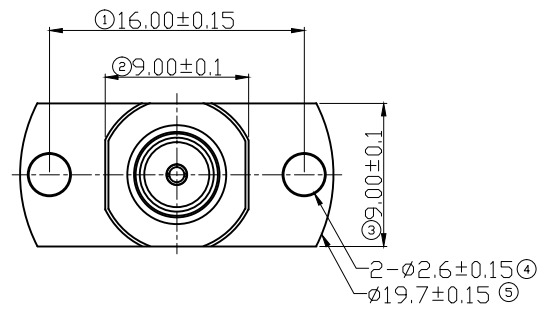
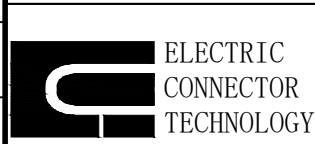


REV.	ECN NUMBER	DESCRIPTION	DATE	DRAWN	CHECK	APPROVED
A	ECN201407	FIRST EDITION	09/12/20	Martin	Martin	Ken
A1	ECN201407	修改6号尺寸 MODIFY SIZE 6	07/16/22	Beam	Martin	Ken



NOTE:  
 1. MATING ANGLE MUST BE LESS  $\pm 2^\circ$  DEGREE.  
 2. THIS ADAPTOR MUST BE PUSHED ON THE RECEPTACLE WITH 10 TO 12.ON.

NOTES:  
 1. TECHNOLOGY PARAMETERS:  
 1.1) NORMAL IMPEDANCE: 50 OHM;  
 1.2) FREQUENCY RANGE: DC~6GHZ;  
 1.3) V. S. W. R. : 1.3 (DC:0~3GHZ); 1.4 (3~6GHZ);  
 1.4) INSERTION LOSS: 0.4DB MAX. (DC:0~3GHZ)  
 0.6DB MAX. (DC:3~6GHZ)  
 1.5) DURATION : 100000 CYCLES;  
 1.6) WITHSTANDING VOLTAGE: 300V AC/1MIN. ;  
 1.7) TEMPERATION ALLOWED: -40~+85°C;  
 1.8) HUMIDITY ALLOWED: 15%~85%;  
 1.9) HARMFUL SUBSTANCES MEET ECT “《QE-Q-19-001 ENVIRONMENTAL HARMFUL SUBSTANCES MANAGEMENT STANDARS》” CONTROL SPECIFICATION.



GENERAL TOLERANCE	
XX. $\pm 0.40$	
X. $\pm 0.25$	X.* $\pm 2.0^*$
.X $\pm 0.13$	.X* $\pm 1.0^*$
.XX $\pm 0.13$	.XX* $\pm 0.5^*$

SCALE:	2:1
UNIT:	mm
SIZE:	A4

DRAWN	JIE
CHECK	
APPROVE	

DATE	10.30.2019
DATE	
DATE	

DWT NO.	600-17661-01
PARTS NO.(INTENDED USE)	
	818017661

TITLE	(CUSTOMER DRAWING) MINI RF III TO SMA FEMALE (TEST ADAPTOR)
-------	---

REV.	A1
SHEET	1/1